

# Innovation Dialogue Event II

Organised by University Medical Center Schleswig-Holstein (UKSH)

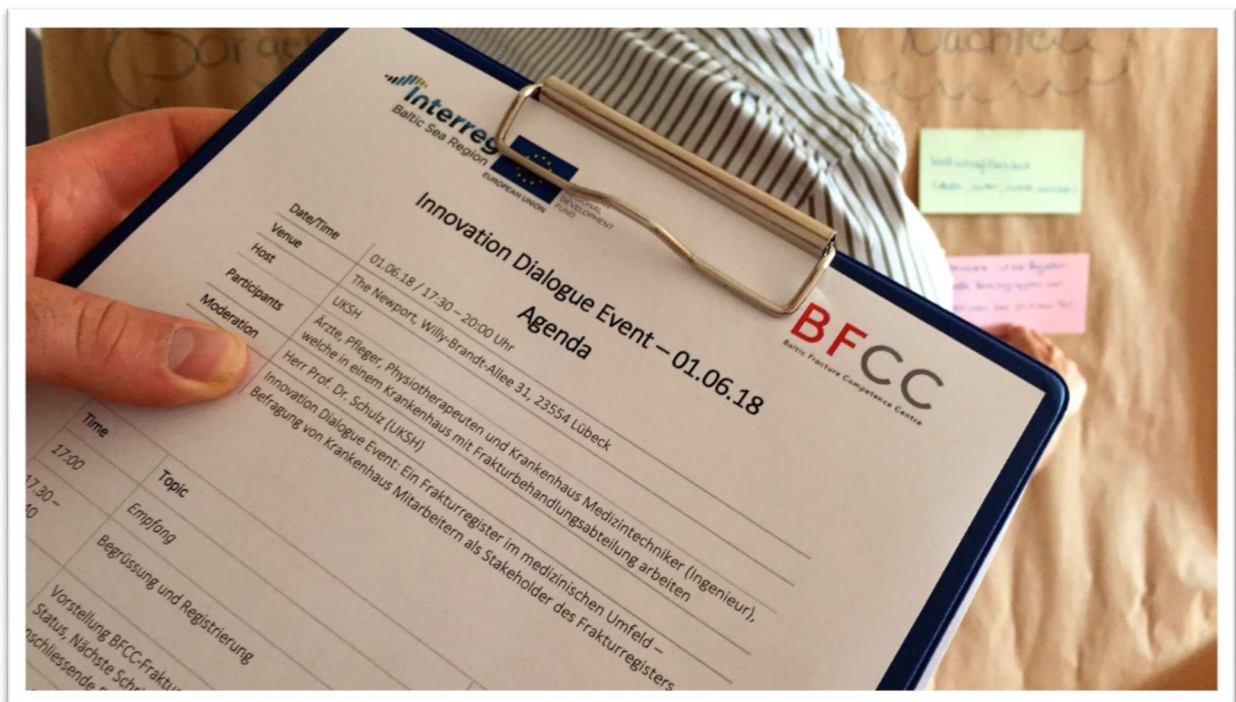
1. July 2018 Lübeck

Summary

## *Topic of the day*

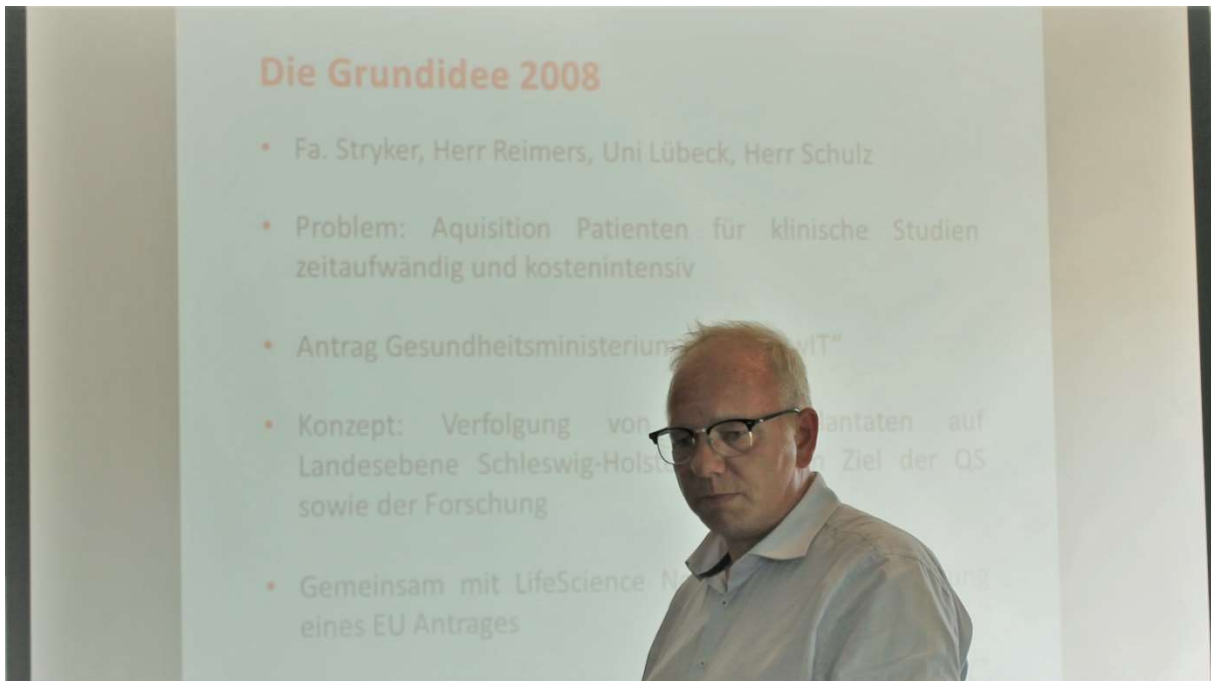
A Fracture Register in the Medical Environment - Survey of Hospital Employees as Stakeholders of the Fracture Register.

## *Welcome and introduction*



Prof. Schulz (UKSH) welcomed various professional groups (doctors, nurses, physiotherapists and hospital medical technicians (engineers)) to the innovation dialogue in Lübeck: "A Fracture Register in the Medical Environment - Survey of Hospital Employees as Stakeholders of the Fracture Register".

*BFCC – A Fracture Competence Center*



Prof. Schulz presented in detail the Interreg project BFCC - Baltic Fracture Competence Centre, which provides for the establishment of an international register at European level. In his presentation, he dealt in detail with the target groups, the challenges, the structure and the current status of the register. Already at this point there was an interesting round of questions from the circle of participants in this event.

*Brainstorming and discussion of problems*

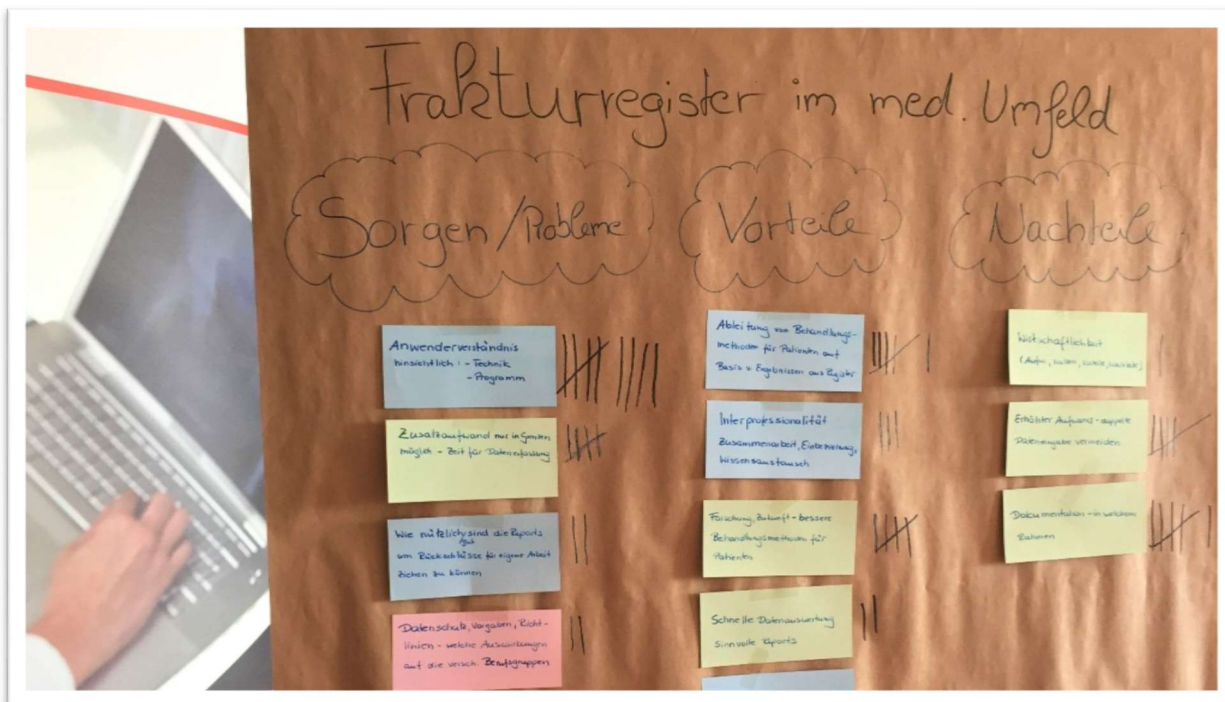


After the presentation of the BFCC register by Prof. Schulz, the participants worked out questions relating to their respective professional group which are connected with the use of a register in their direct working environment. The following points were developed by the participants together.

Professional group	Questions (Advantages, Disadvantages, Concerns)
<b>Physiotherapists</b>	User understanding - problems in handling technology and programs...
	Do the reports contain useful data from which conclusions can be drawn and integrated into working life?
	Transparency
	Interprofessional cooperation
	Interprofessionality - cooperation, involvement, knowledge exchange with other professional groups
	Derivation of treatment methods for the patient on the basis of the results from the register
	Own contribution to the register vs. own expense
<b>Doctors / Engineers</b>	Effort: avoid double data entry
	Reduce additional effort - time for data entry in the register
	Do the reports contain useful data from which conclusions can be drawn and integrated into working life?
	Transparency
	Documentation - within what framework, how many documentation is enough
	Fast data evaluation - meaningful reports
	Derivation of treatment methods for the patient on the basis of the results from the register
	Research, future - better treatment methods, advantages for the doctor and also for the patient
	Own contribution to the register vs. own benefit
	Economic efficiency (effort, benefits, advantages, disadvantages)
<b>Nurses</b>	Effort: avoid double data entry
	Reduce additional effort - time for data entry in the register
	Transparency
	Documentation - within what framework
	Interprofessional cooperation
<b>General</b>	Own contribution to the register vs. own expense
	Data protection, specifications, guidelines - what effects on the various professional groups
	Relevance: Is a register beneficial for all professions or only for a few?
	Which professional groups benefit most, which least?

One point that concerns all professional groups equally is the question of how high the additional effort is to be estimated if one were to become involved and cooperate in the register, regardless of whether it is a matter of collecting data in the register or evaluating data from the register or drawing conclusions for one's own field of activity and adapting work processes/contents, treatment methods etc..

*Overview of the prioritized problems*



Two of all questions were selected to be addressed jointly according to the methodology for the local innovation dialogue events.

Question 1: What if no physiotherapists would worry about data entering, handling technology and programs?

Question 2: What if doctors could concentrate on the essentials of their work - does data collection belong to it?

*Main conclusion and next steps*

All participants agreed that this meeting was very important in order to develop a greater understanding of the concerns of the other professional groups. The involvement of the most diverse professional groups working in hospitals when it comes to the introduction or cooperation in a register is found to be very meaningful by all those present. The next step is to hold a 2-day training event (taking into account shift work) for working with the register.

*End*

Prof. Schulz thanked all participants for their willingness to discuss and their interesting contributions.